

true-Xtended RMS / IQP Reporting

Reporting and Document-Tracking for
classified and RMS protected data

About Keyon AG

keyon

information security? just relax.

Corporate PKI

Software Engineering

IT- and Mobile Security

Digital Signature Services

Identity & Access Management

Security and Business Consulting

Data Loss Prevention & Information Rights Management



About Microsoft Rights Management

- Comprehensive technology to protect confidential data across major platforms (Windows, iOS, Mac OS X, Android)
- Security is intrinsically tied to the data, no dependency to other security measures
- Flexible management of users and roles (joiners / movers / leavers / deputies / auditors / legal investigators)
- Online-and offline capabilities

About Secure Islands IQP

- Extends the capabilities of the Microsoft RMS
 - Protection any classification of any file-types
 - RMS enlightening of any application
- Classification of data
- Automation of classification and security processes
 - Automated protection for Web Applications or File Shares
 - Automated protection based on content specific patterns
- Comprehensive User GUI

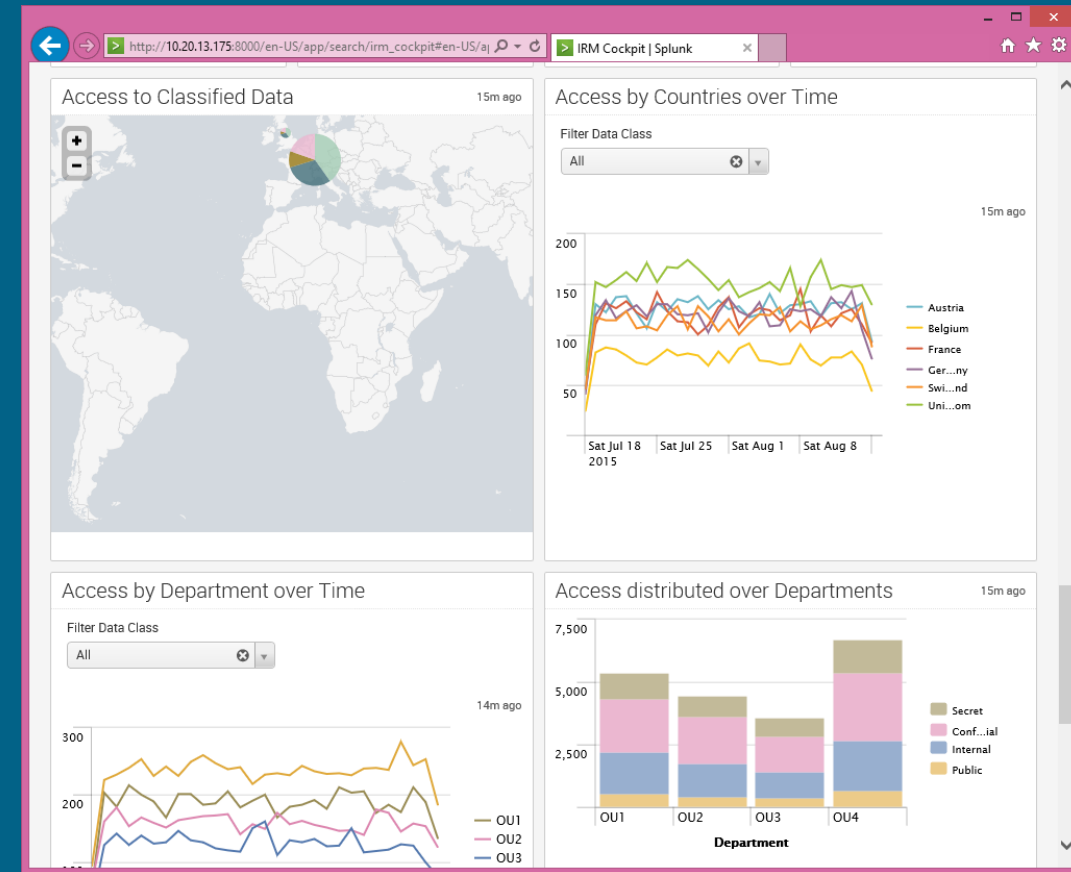
Reporting and Document-Tracking capabilities...

The usage of RMS was a blind flight so far. You never knew who was consuming protected data when and where....

... open your eyes and control your data

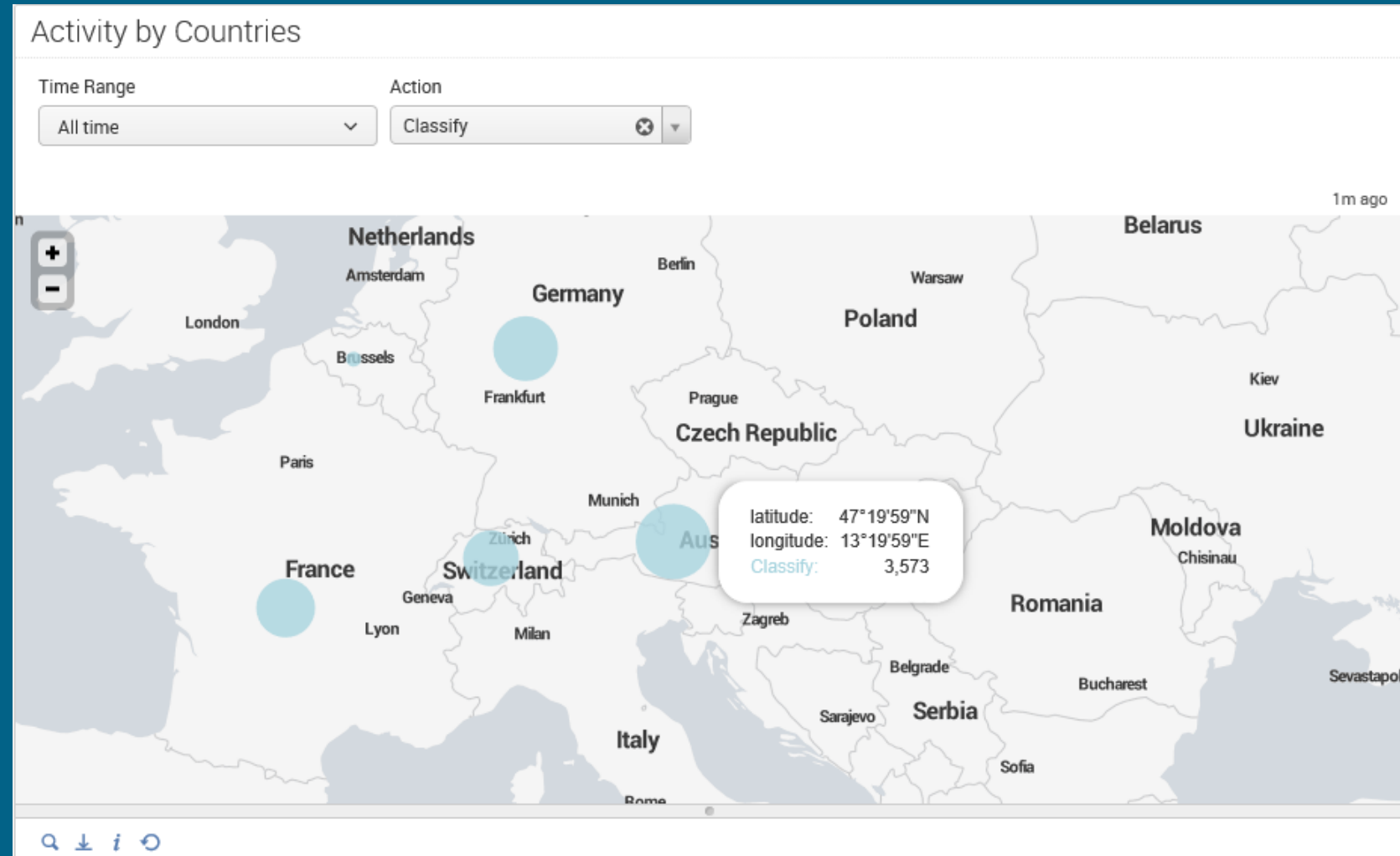
true-Extended reporting for RMS / IQP

- Collects events and log-files from many sources
- Aggregates events and log-files with business- or organizational specific information
- Creates dynamic up to date reports for
 - Business users
 - Legal investigators and Auditors
 - Operations and incident managers



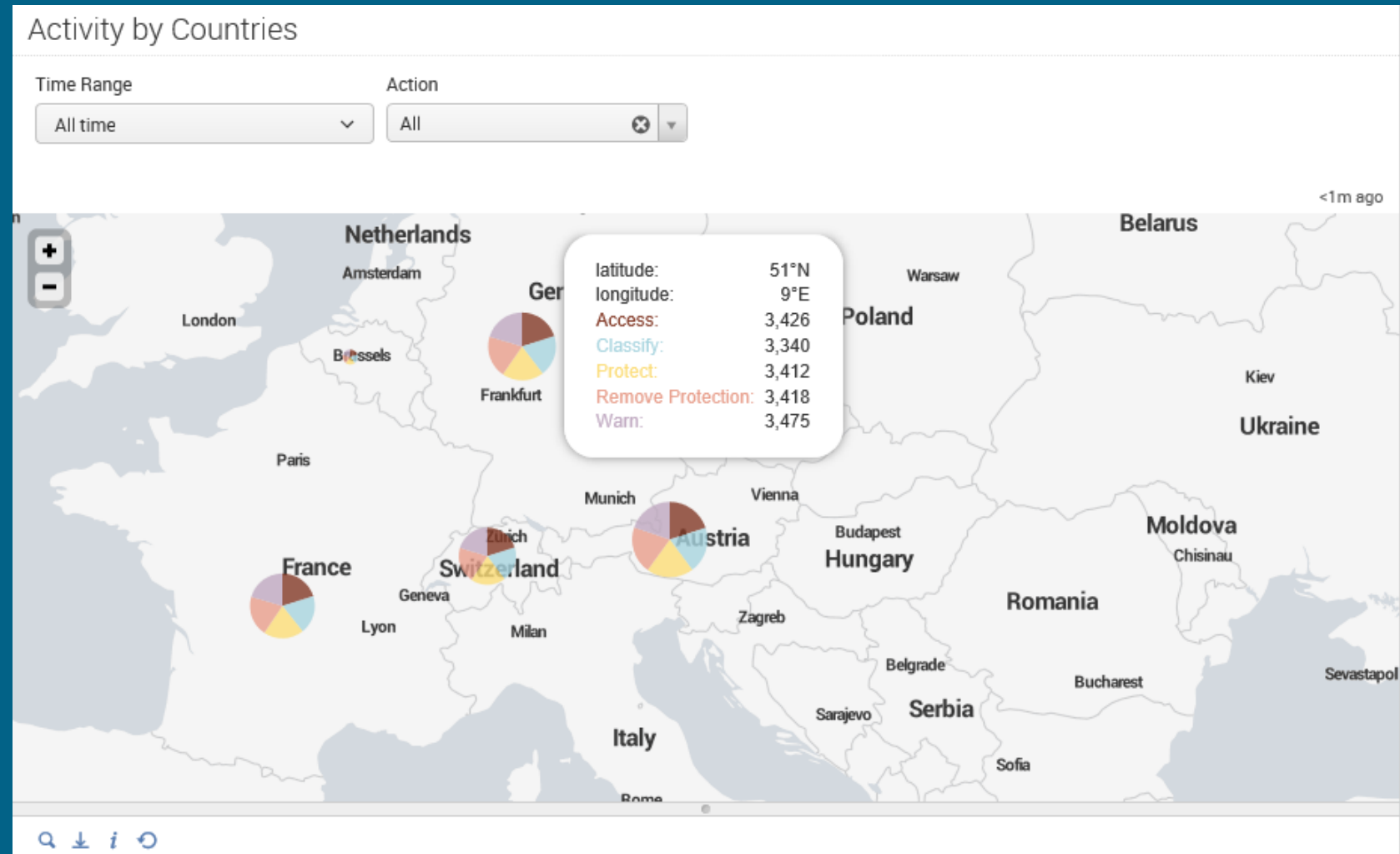
Look and feel – example 1

- Who classified / protected data by when and where?



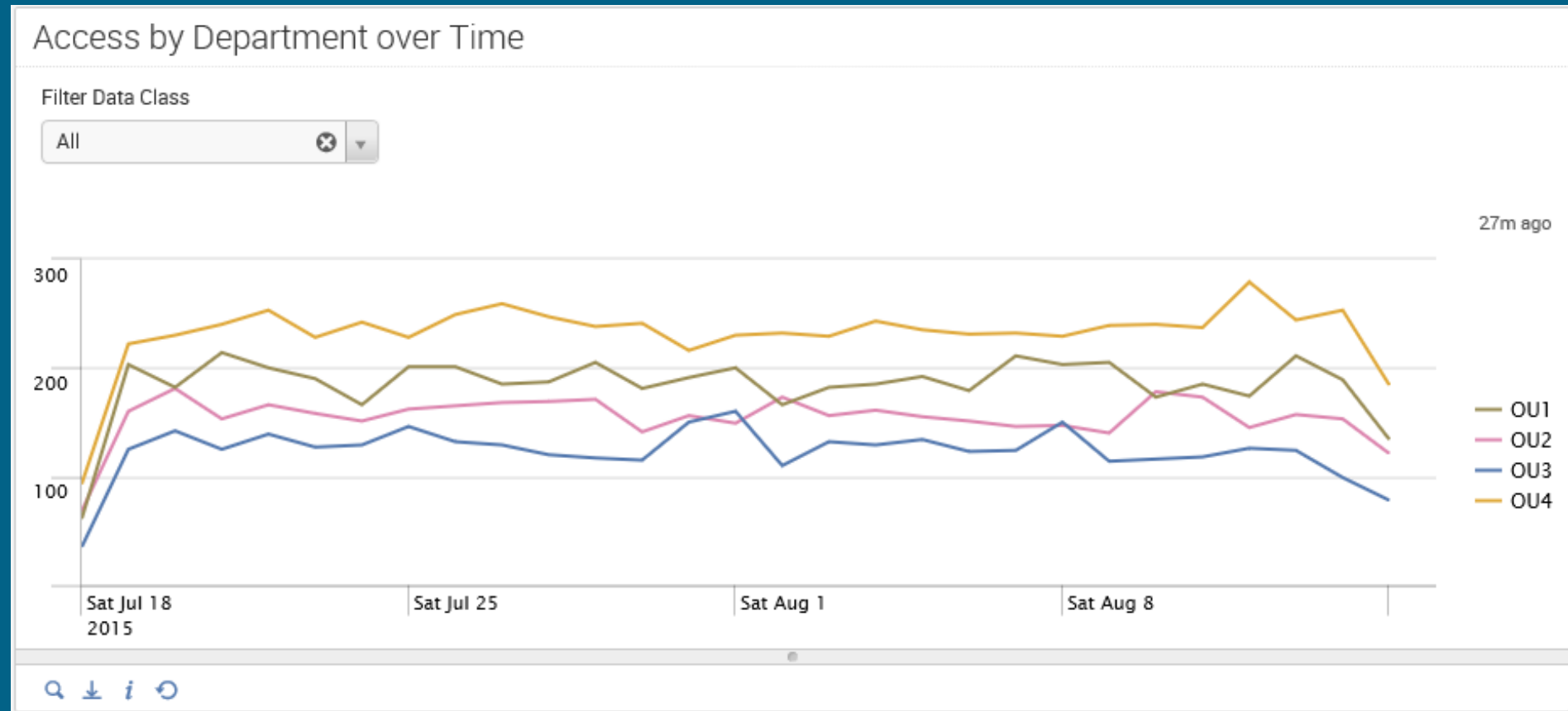
Look and feel – example 2

- Overview about all RMS / IQP activities by location and time



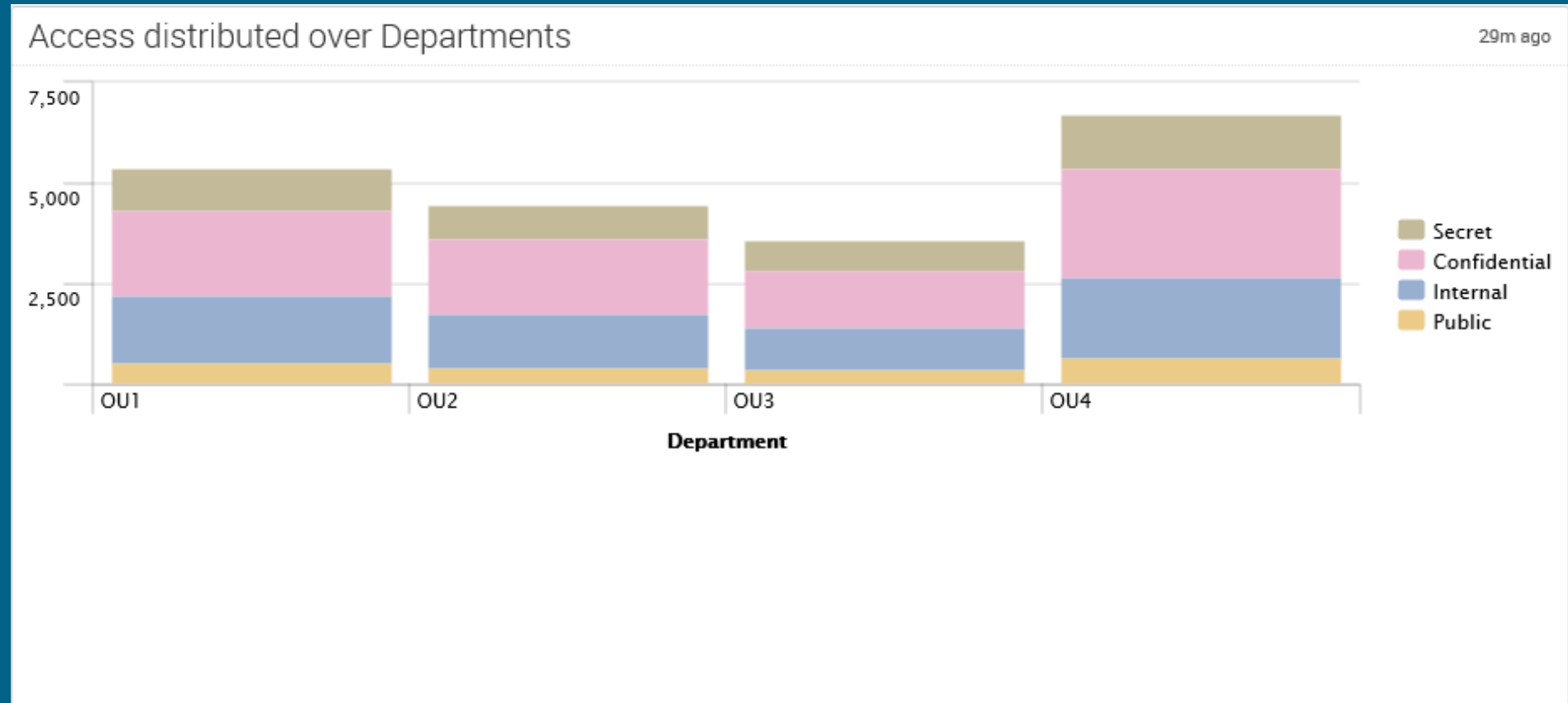
Look and feel – example 3

- How often is classified / protected data being opened by OU over the time?



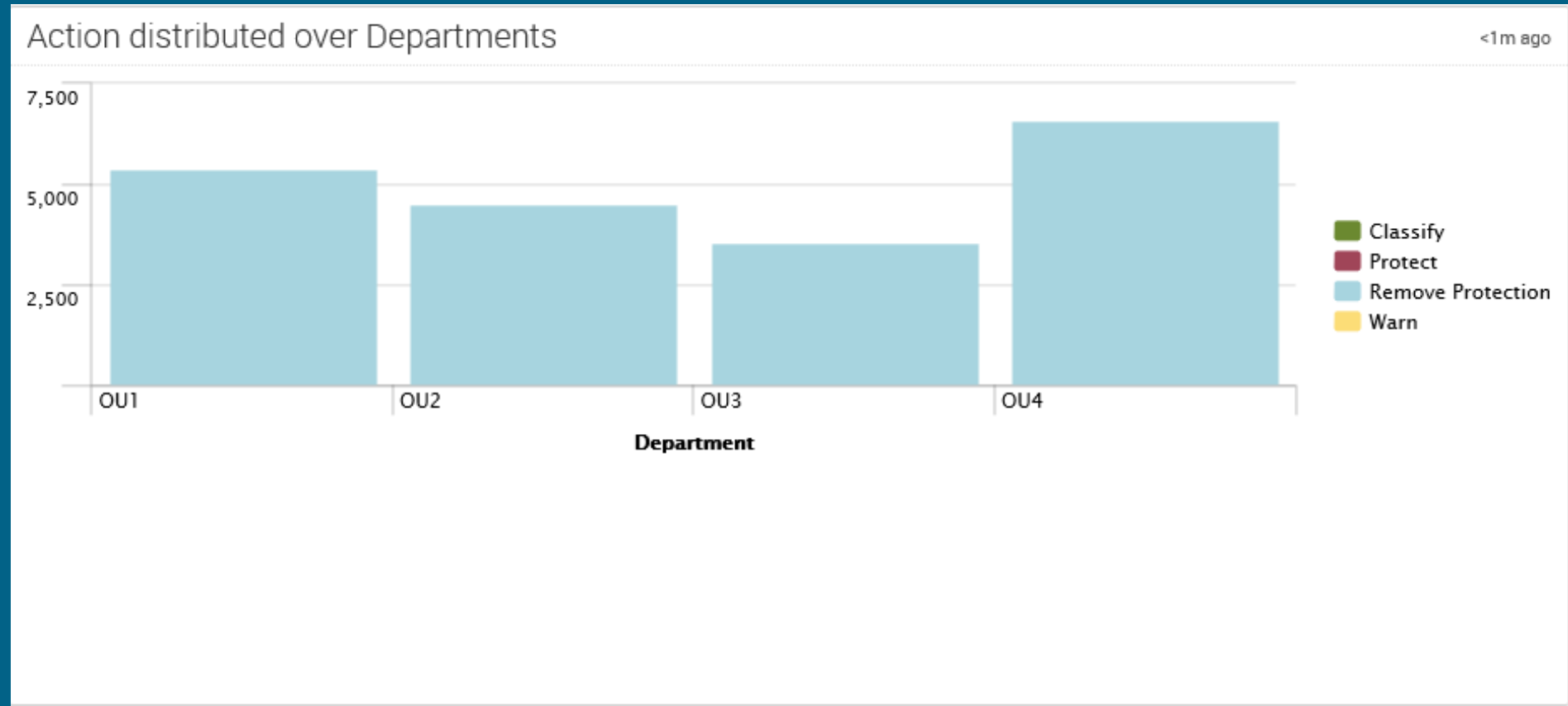
Look and feel – example 4

- How often is classified / protected data being opened by OU w.r.t. a specific classification?



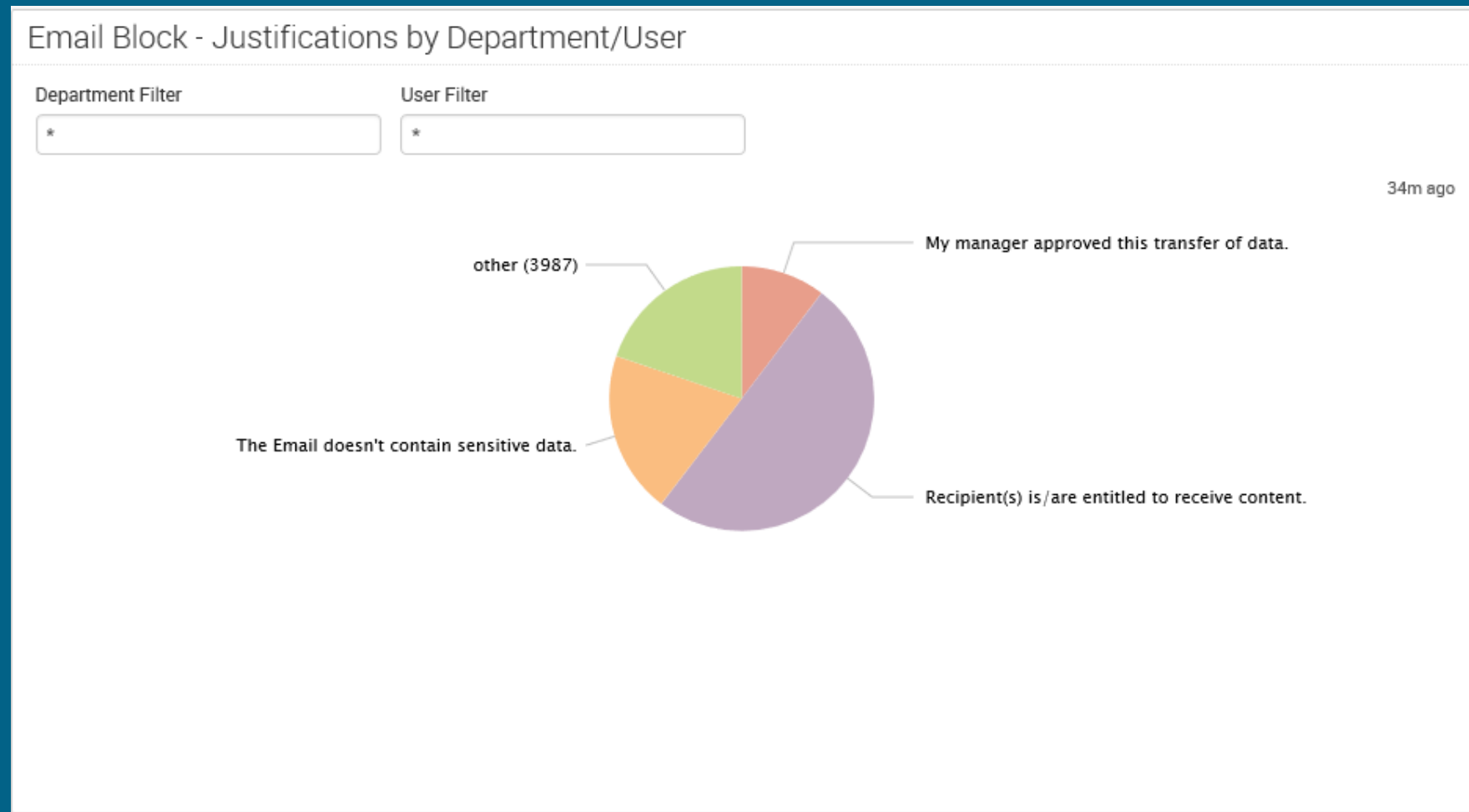
Look and feel – example 5

- How often is classification / protected being removed by OU?



Look and feel – example 6

- Overview about user justifications w.r.t. given answers by OU



Look and feel – example 7

- Overview about given answers for user justifications by
 - Date
 - Sender
 - OU
 - Location
 - Recipient
 - Given answer

Email Block - Latest User Justifications

Time Range: All time (dropdown) | Sender Filter: * | Department Filter: *
Country Filter: * | Recipient Filter: *

37m ago

Date	Sender	Department	Country	Recipient	Justification
15.08.2015 16:10:19	user14@adrms.test	OU4	Austria	user47@adrms.test	Recipient(s) is/are entitled to receive content.
15.08.2015 16:07:44	user33@adrms.test	OU1	France	user94@adrms.test	User defined message 1557663
15.08.2015 16:07:12	user44@adrms.test	OU2	France	user38@adrms.test	User defined message 4220830
15.08.2015 16:04:09	user59@adrms.test	OU2	Germany	user46@adrms.test	The Email doesn't contain sensitive data.
15.08.2015 16:04:08	user73@adrms.test	OU2	Switzerland	user91@adrms.test	User defined message 6608751
15.08.2015 16:01:21	user78@adrms.test	OU2	Belgium	user20@adrms.test	Recipient(s) is/are entitled to receive content.
15.08.2015 16:01:19	user82@adrms.test	OU3	Germany	user42@adrms.test	User defined message 7287428
15.08.2015 16:00:36	user46@adrms.test	OU2	Belgium	user43@adrms.test	My manager approved this transfer of data.
15.08.2015 15:59:56	user15@adrms.test	OU4	France	user56@adrms.test	Recipient(s) is/are entitled to receive content.
15.08.2015 15:58:55	user29@adrms.test	OU3	Belgium	user29@adrms.test	User defined message 6299975

« prev 1 2 3 4 5 6 7 8 9 10 next »

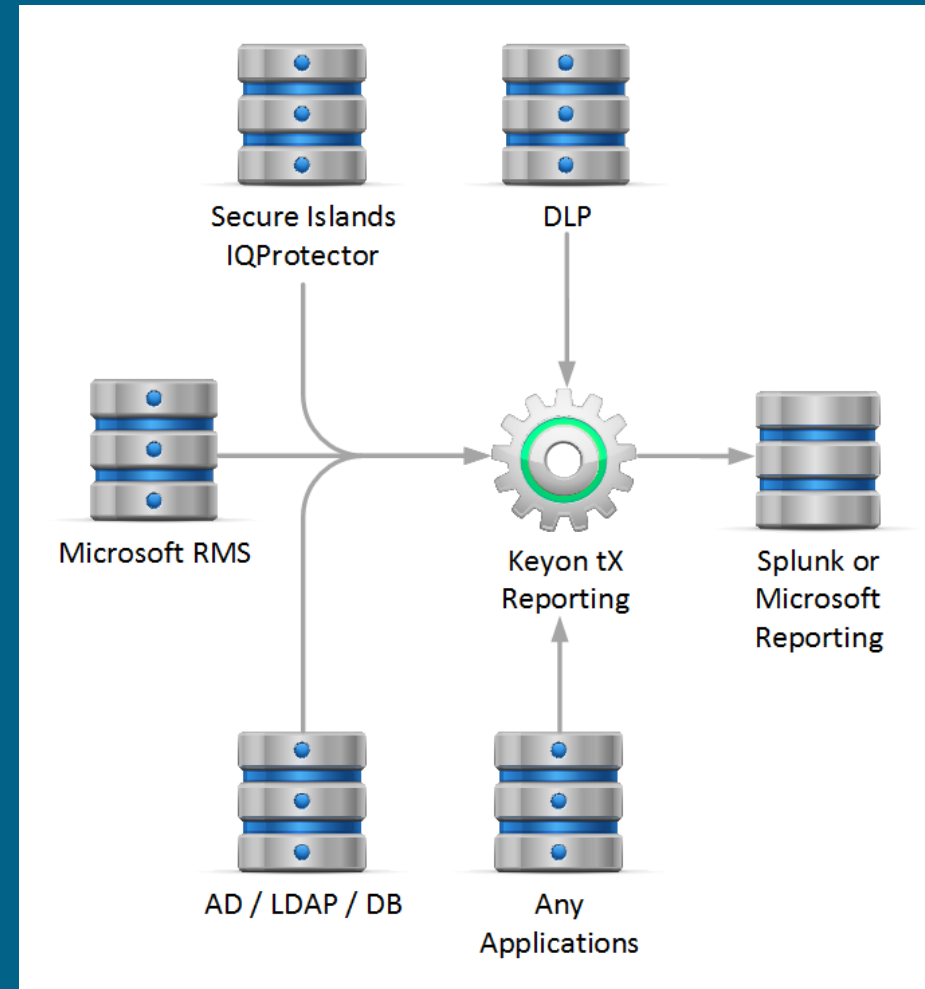
Q ↓ i ↻

Scope, Application area

- Business reporting
 - Distribution and usage of classified / RMS protected documents
 - Policy violation by OU, location or any other attributes
- Legal investigation / Audit
 - Policy violation by user, OU, location or any other attributes
 - User activities by time, location, or any other attributes
 - Extended reports based on other data sources (e.g. DLP, E-Mail, other systems)
- Operations, incident management

Architecture, technical processes

- Keyon - true-Extended Reporting for RMS and IQP
 - Collects log-files and events from many sources, especially from Secure Islands IQP and Microsoft RMS Servers
 - Enriches log-files and events from further sources (e.g. AD, LDAP, DB's, DLP Systems, other Applications)
 - Periodically copies enriched log-files and events into Splunk or Microsoft Reporting Services
 - Data collection and reports can be customized



Q&A

Thank you for your attention

eberhard@keyon.ch, CEO